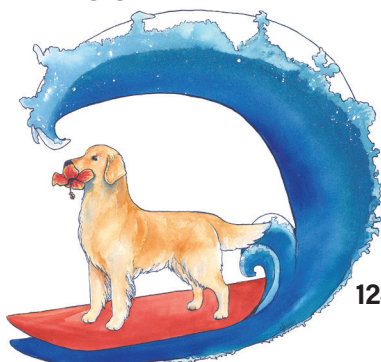


JUDGING PROGRAM

AMERICAN KENNEL CLUB RULES & REGULATIONS GOVERN THESE EVENTS.

Event Numbers: #1-2024113303(C/O), 2024113301(R), #2-2024113302 (C)

GOLDEN RETRIEVER CLUB OF HAWAII, INC.



TWO SPECIALTY SHOWS Sunday, January 28, 2024

102nd Specialty Show (Golden Retrievers only)

103rd Specialty Show (Golden Retrievers only)

34th All Breed Obedience Trial

33rd All Breed Rally Trial

Moanalua Middle School

1289 Mahiole Street • Honolulu, Hawaii

AKC LICENSED • OUTDOORS • UNBENCHED • SHOW HOURS: 7:00AM-5:00PM



SHOW COMMITTEE

Lei Taft - Show & Obedience Chair

Volcano, HI 96785

leitaft@hawaii.rr.com • 808-896-6911

Peggy Ketcham - Rally Chair

Kapolei, HI 96707

peggyketcham@hawaii.rr.com • 808-927-1943

All Officers & Directors of The Golden Retriever Club of Hawaii, Inc.

VETERINARIAN - ON CALL

Veterinary Emergency + Referral Center of Hawaii

345 N. Nimitz Hwy., Unit C, Honolulu, HI 96817

Tel. 808-735-7735

Directions to Veterinarian from Show Site: From the access road near Moanalua Gardens, head west towards Mahiole Street, turn right on Mahiole Street, turn right onto Jarrett White Road, continue straight onto Puuloa Road, turn left onto Nimitz Highway, keep right to stay on Nimitz Highway, make a slight left turn onto Awa Street, continuing in a loop.

You will see VERC on your left. (This is next door to the old Flora Dec location.)

OFFICIAL PHOTOGRAPHER - MICHELLE OKI

Only the Official Photographer may take win photos.

Win photos will be a \$20.00 donation to the host club



AMERICAN
KENNEL CLUB®

CERTIFICATION Permission has been granted by the American Kennel Club for the holding of this event under the American Kennel Club rules and regulations.

GINA M. DINARDO, Executive Secretary



BaRay Event Services, Inc.

A.K.C. ANNUALLY LICENSED SUPERINTENDENTS
MEMBER: DOG SHOW SUPERINTENDENTS ASSOCIATION

• SHEILA RAYMOND • BECKY SUMNER • JERRY SUMNER • ANDREA L. FERNANDEZ
• KRISTIN MARICICH • SHARON SAMSON • ROBERTA MARTIN • GLENN WHITTEN
• KRISTILYN FALKENTHAL • SCOTT KIPP • JEFFERY INMAN • HILLARY TREGILLUS

PO BOX 508, BURLINGTON, WA 98233-0508

PHONE: 360-755-7086 • FAX: 360-755-2248

HAND-DELIVERED, EXPRESS or PRIORITY, FEDEX or UPS:

113 E. FAIRHAVEN AVE., BURLINGTON, WA 98233-0508 (do NOT require signature)

E-MAIL: dogshows@barayevents.com • WEB SITE: BaRayEvents.com

OFFICE HOURS
10AM-5PM
PACIFIC TIME
MON.-FRI.

Like us on
FACEBOOK



JUDGES

Mrs. Janis I Grannemann [7083]..... LANTANA, TX
Show 1 - All Regular and Non-Regular Conformation Classes
Sherry L. Anderson [91198].....ENID, OK
Show 2 - All Regular and Non-Regular Conformation Classes
Ms. Janice D Anthes [5276]..... CEDAR CREST, NM
All Obedience Classes & All Rally Classes

ATTENTION EXHIBITORS

- CONDITIONAL, UNSIGNED, INCOMPLETE OR ENTRIES RECEIVED WITHOUT FEES will not be accepted.
- No drinking or alcoholic beverages are allowed on the show grounds. Exhibitors and handlers are responsible for clean conditions in and around their crates.
- THERE SHALL BE NO DRILLING, INTENSIVE OR ABUSIVE TRAINING OF DOGS ON THE SHOW GROUNDS OR PREMISES. NO PRACTICE RINGS OR AREAS SHALL BE PERMITTED. (AKC Obedience Regulations, Chapter 2, Section 26).
- The owner or agent entering a dog in this Show does so at his own risk. THE CLUB WILL NOT BE RESPONSIBLE for loss of, or damage to, any dog exhibited. Every dog in the Show is in the care, custody and control of his owner or handler during the entire time the dog is on the show premises. ALL DOGS MUST BE HELD ON LEASH OR CONFINED TO A CRATE EXCEPT WHEN BEING JUDGED.
- Mixed Breed dogs desiring to enter the Obedience and/or Rally Trial must be enrolled in the American Kennel Club Canine Partners Program.
- Returned checks do not constitute a valid entry fee. The Club will add a Service Fee of \$20.00 to the amount of each returned check. Subsequent entries from the same Exhibitor or Agent will result in their being placed on a CASH ONLY basis for show entries.
- The Club is not responsible and is not obligated to furnish any service for notifying exhibitors or their agents of judging. Owners or agents alone are responsible for the presence of their dogs in the judging ring when their classes are called. The judge will not wait for any dog holding up a class. Dogs should be on the show grounds no later than ½ hour before judging. Consult judging program for time of judging. Dogs not required for further judging will be excused after their class is judged.
- The Golden Retriever Club of Hawaii, the Superintendent, their agents or employees will not be responsible for the loss or damage to any person or dog exhibited, whether the result of accident or other causes. Every dog at this show is in the custody and control of his owner/agent during the entire time the dog is on the show premises.

TRANSFER OF ENTRIES

NOTE: TRANSFER OF ENTRIES AND REQUESTS FOR REFUNDS FOR PUBLISHED JUDGE CHANGES WILL NOT BE ACCEPTED IN THE OFFICE AFTER 12:00 NOON ON MONDAY, JANUARY 22. AFTER THIS TIME, YOU MUST CONTACT THE SUPERINTENDENT ON SITE.

CONFORMATION: Dogs may be transferred from one of the regular classes to the Best of Breed or Variety competition, provided this transfer is presented to the Superintendent at least one half-hour prior to the scheduled start of any regular conformation judging at the show.

OBEEDIENCE OR RALLY: A transfer (i.e., from an obedience class to an obedience class; or a rally class to a rally class) may be requested if, according to the owner's records the handler and dog are eligible provided the club offers transfers. Transfers from an "A" to "B" class at the same level are allowed provided the host club allows transfers. The request for a transfer must be in writing and presented to the Superintendent or Trial Secretary at least 30 minutes prior to the start of each trial. Clubs may choose to accept transfers prior to the day of the trial and this should be clearly stated in the premium list. Transfers may be approved provided the class and judge are available, and the class has not reached its limit.

GOLDEN RETRIEVER PROGRAM OF JUDGING

SUNDAY, JANUARY 28, 2024

SHOW #1 - 12 Dogs, 12 Entries ▪ Show #2 - 12 Dogs, 12 Entries

Obedience: 15 Dogs, 17 Entries ▪ Rally: 14 Dogs, 27 Entries

9:15AM - SHOW #1

JUDGE: JANIS I GRANNEMANN

12 Retrievers (Golden)

4-2-3/3

4 Open Dogs

Winners Dog

Reserve Winners Dog

2 Open Bitches

Winners Bitch

Reserve Winners Bitch

6 Best of Breed Competition 3/3

Best of Breed, Best of Winners,

Best of Opposite Sex,

Select Dog, Select Bitch

10:45AM - SHOW #2

JUDGE: SHERRY ANDERSON

12 Retrievers (Golden)

4-2-3/3

4 Open Dogs

Winners Dog,

Reserve Winners Dog

2 Open Bitches

Winners Bitch,

Reserve Winners Bitch

6 Best of Breed Competition 3/3

Best of Breed, Best of Winners,

Best of Opposite Sex,

Select Dog, Select Bitch

ALL-BREED OBEDIENCE TRIAL

JUDGE: JANICE D ANTHES

8:30AM

2 Utility B1401, 1403

8:50AM

3 Utility A1501-1503

9:15AM

3 Open B1401-1403

9:45AM

2 Open A 1301-1302

10:10AM

3 Novice B1201-1203

10:30AM

2 Novice A1101-1102

10:45AM

1 Beginner Novice B1741

1 Beginner Novice A 1701

ALL-BREED RALLY TRIAL

JUDGE: JANICE D ANTHES

11:30AM

3 Rally Choice...[2502], 2901-2902

11:45AM

6 Rally Master.....[2501-2502,
2504-2507]

AFTERNOON

7 Rally Excellent B.....[2501-2502,
2504-2507], 2701

7 Rally Advanced B.....2501-2507

1 Rally Advanced A.....2401

2 Rally Intermediate2301-2302

1 Rally Novice A.....2101

Moanalua Middle School
1289 Mahiole Street
Honolulu, Hawaii 96819
(located next to Moanalua Gardens)

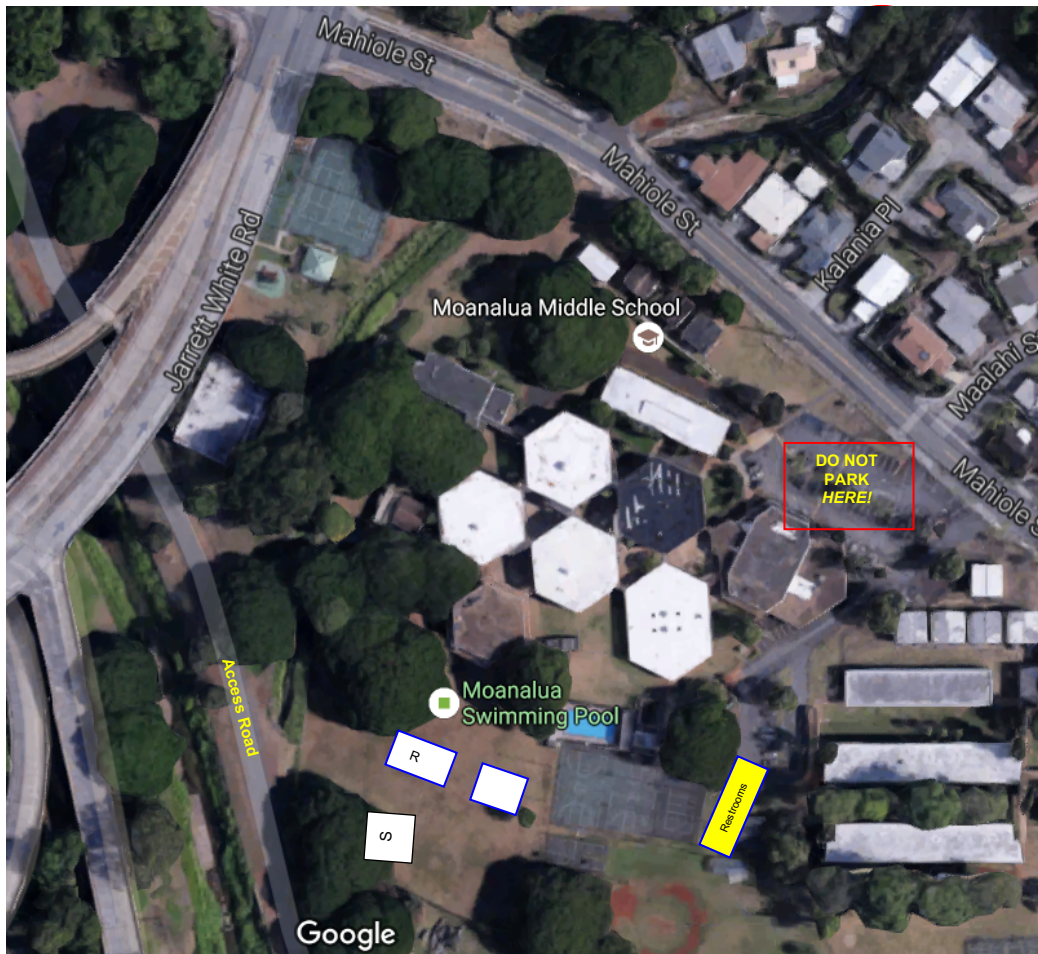
Directions to the field behind the school:

From the west side: Traveling on the Moanalua Freeway, take the “Airport/Tripler Hospital Exit Only (Exit 3)” cutoff. Stay in the far LEFT lane (you will come to a traffic signal). Turn left onto Jarrett White Road. Turn left at the second traffic signal onto Mahiole Street (you will see two “Dead End” signs). Continue turning LEFT until you are under Jarrett White. Continue past a building and parking lot. You will see a chain link fence with a few steps leading to an open field behind Moanalua Middle School on your left.

From the east side: Traveling on Moanalua Freeway, take the “Puuloa Rd./Tripler Hosp. (Exit 3)” cutoff (traffic signal- Jarrett White Road). At the traffic signal, turn right onto Jarrett White Road and get into the far LEFT lane. Turn left at the next traffic signal onto Mahiole Street (you will see two “Dead End” signs). Continue turning LEFT until you are under Jarrett White. Continue past a building and parking lot. You will see a chain link fence with a few steps leading to an open field behind Moanalua Middle School on your left.

From the east side AFTER 8:00 a.m. (when Moanalua Gardens opens):

After you take the “Puuloa Road/Tripler Hospital” cutoff, turn into the Moanalua Gardens parking lot (DO NOT PARK IN THIS PARKING LOT). To your left, you will see an access road. Continue on this road. You will see a chain link fence with a few steps leading to an open field on your right.



Reminders/Guidelines

Please do NOT setup before the clubs set up the rings and ring tents (approx. 6:30 a.m./ 7:00 a.m.). There will be NO overnight security. Moanalua Middle School will allow exhibitors to set up their crates under the large trees behind the classrooms. **Absolutely NO tent stakes are allowed. City Parks Department will allow pop-up tents only if they are secured with above-ground tent weights.**

It is strongly recommended that exhibitors park on the access road (see directions above). There is a small parking lot by the restrooms but is usually reserved for baseball practice on the lower field. **DO NOT park in the school's parking lot on Mahiole Street.** A church has a permit to use this parking lot and is required to lock the parking lot after the services.

Public restrooms are located after the basketball courts in the pavillion (yellow box).

Please remove your own trash from the field as there will be no trash pickup. Please help us by following these rules so we do not risk losing this location for future shows/trials.

Rev. 11/29/2023