

# JUDGING PROGRAM

AMERICAN KENNEL CLUB RULES & REGULATIONS GOVERN THESE EVENTS.

Event Numbers: #1-2026113305 (C/O/J) #2-2026113304 (C/J), 2026113306 (R)

AKC LICENSED • OUTDOORS • UNBENCHED • SHOW HOURS: 7:00AM-5:00PM

AKC WEEKEND CLUB HOTLINE: 919-816-3955 or visit the AKC Event Cancellations page at: <https://www.akc.org/sports/event-cancellations/> for event cancellation information.

## GOLDEN RETRIEVER CLUB OF HAWAII, INC.



### TWO SPECIALTY SHOWS Sunday, June 21, 2026

112th Specialty Show (Golden Retrievers only)

113th Specialty Show (Golden Retrievers only)

40th All Breed Obedience Trial

39th All Breed Rally Trial

Moanalua Middle School  
1289 Mahiole Street • Honolulu, Hawaii

### SHOW COMMITTEE

#### Lei Taft - Show & Obedience Chair

PO Box 118 • Volcano, HI 96785-0118

leitaft@hawaii.rr.com

Day of Show Phone: 808-896-6911

Assistant Show Chair: Ed Robello • erobello@hawaii.rr.com

Day of Show Phone: 808-285-2982

#### Charlotte Hee - Rally Chair

hokunme@hawaii.rr.com • 808-349-6900

Bench Committee: All Officers, Members of the Board of Directors  
& Any Other Members Present.



### VETERINARIAN - ON CALL

#### Veterinary Emergency + Referral Center of Hawaii

345 N. Nimitz Hwy., Unit C, Honolulu, HI 96817 • Tel. 808-735-7735

Directions to Veterinarian from Show Site: From the access road near Moanalua Gardens, head west towards Mahiole Street, turn right on Mahiole Street, turn right onto Jarrett White Road, continue straight onto Puuloa Road, turn left onto Nimitz Highway, keep right to stay on Nimitz Highway, make a slight left turn onto Awa Street, continuing in a loop.

You will see VERC on your left. (This is next door to the old Flora Dec location.)

THERE IS NO OFFICIAL PHOTOGRAPHER

### JUDGES

Ms. Leita A Estes [7375].....RAMONA, CA

Show 1 - All Regular and Non-Regular Conformation Classes & Junior Showmanship

Ms. Bridget Brown [102665].....BESSEMER, AL

Show 2 - All Regular and Non-Regular Conformation Classes & Junior Showmanship

Mrs. Dawn M Antoniak-Mitchell [39068].....SAN TAN VALLEY, AZ

All Obedience Classes & All Rally Classes



AMERICAN  
KENNEL CLUB®

CERTIFICATION Permission has been granted by the  
American Kennel Club for the holding of this event  
under the American Kennel Club rules and regulations.

SHEILA H. GOFFE, Executive Secretary



### BaRay Event Services, Inc.

A.K.C. ANNUALLY LICENSED SUPERINTENDENTS

MEMBER: DOG SHOW SUPERINTENDENTS ASSOCIATION

- SHEILA RAYMOND • BECKY SUMNER • JERRY SUMNER • ANDREA L. FERNANDEZ

- KRISTIN MARICICH • SHARON SAMSON • ROBERTA MARTIN • GLENN WHITTEN

- KRISTILYN FALKENTHAL • SCOTT KIPP • JEFFERY INMAN • ANDREW MUELLER

PO BOX 508, BURLINGTON, WA 98233-0508

PHONE: 360-755-7086 • FAX: 360-755-2248

HAND-DELIVERED, EXPRESS or PRIORITY, FEDEX or UPS:

113 E. FAIRHAVEN AVE., BURLINGTON, WA 98233-0508 (do NOT require signature)

E-MAIL: dogshows@barayevents.com • WEB SITE: BaRayEvents.com

OFFICE HOURS  
10AM-5PM  
PACIFIC TIME  
MON.-FRI.

Like us on  
FACEBOOK



### NEW EXHIBITOR BRIEFING

Superintendent will have New Exhibitor Handbooks available, and are there to answer any of your questions on the days of the shows.

**IMPORTANT EXHIBITOR INFORMATION**  
ADDITIONAL RULES INCLUDED IN PREMIUM LIST - READ IT. There is no acceptable excuse for breaking or being unfamiliar with the rules.

The AKC is committed to creating a safe and respectful sport environment for all. If you need to talk to someone, or need help, please call 800-656-HOPE (National Sexual Assault Hotline) or text HOME to 741-741 for free, 24/7, confidential services from trained crisis counselors.

### ATTENTION EXHIBITORS

1. CONDITIONAL, UNSIGNED, INCOMPLETE OR ENTRIES RECEIVED WITHOUT FEES will not be accepted.
2. No drinking or alcoholic beverages are allowed on the show grounds. Exhibitors and handlers are responsible for clean conditions in and around their crates.
3. Owners are responsible for any errors in completing entry forms (whomever may make such errors) and no entry fee will be refunded in the event of such errors. Information on the entry forms must be clear and legible. PLEASE PRINT LEGIBLY OR TYPE ALL INFORMATION WHEN COMPLETING THE ENTRY FORM.
4. THERE SHALL BE NO DRILLING, INTENSIVE OR ABUSIVE TRAINING OF DOGS ON THE SHOW GROUNDS OR PREMISES. NO PRACTICE RINGS OR AREAS SHALL BE PERMITTED. (AKC Obedience Regulations, Chapter 2, Section 26).

### TRANSFER OF ENTRIES

**NOTE: TRANSFER OF ENTRIES AND REQUESTS FOR REFUNDS FOR PUBLISHED JUDGE CHANGES WILL NOT BE ACCEPTED IN THE OFFICE AFTER 12:00 NOON ON MONDAY, JUNE 15, 2026. AFTER THIS TIME, YOU MUST CONTACT THE SUPERINTENDENT ON SITE.**

**CONFORMATION:** Dogs may be transferred from one of the regular classes to the Best of Breed or Variety competition, provided this transfer is presented to the Superintendent at least one half-hour prior to the scheduled start of any regular conformation judging at the show.

**JUNIOR SHOWMANSHIP:** Junior Handlers who win a third Novice Class with competition, if a win in Novice leads to a Best Junior with competition present it will count as one win towards moving to Open, after closing of entries for a show are required to transfer their entry from the Novice Class to the Open Class by notifying the Superintendent prior to the start of the class at the show. Correction may be made from one age division to another, as well as, move from Master to Open or Open to Novice if a win has been disallowed or the Junior miscalculated number of placements, provided this transfer must be made to the Superintendent prior to the judging of the class at the show.

**OBEDIENCE OR RALLY:** A transfer (i.e., from an obedience class to an obedience class; or a rally class to a rally class) may be requested if, according to the owner's records the handler and dog are eligible provided the club offers transfers. Transfers from an "A" to "B" class at the same level are allowed provided the host club allows transfers. The request for a transfer must be in writing and presented to the Superintendent or Trial Secretary at least 30 minutes prior to the start of each trial. Clubs may choose to accept transfers prior to the day of the trial and this should be clearly stated in the premium list. Transfers may be approved provided the class and judge are available, and the class has not reached its limit. For Bitches in Season, refer to General Rules in Premium List.

**ATTENTION EXHIBITORS OF FOREIGN DOGS,** please visit <https://www.cdc.gov/importation/dogs/index.html> for the most recent updates regarding bringing a dog into the U.S.

# PROGRAM OF JUDGING - SUNDAY, JUNE 21, 2026

## SHOW #1

14 Dogs, 15 Entries

**JUDGE: LEITA ESTES**

---

### 8:30AM - 1 JUNIOR SHOWMANSHIP

1 Open Intermediate

*Best Junior Handler*

### 14 CONFORMATION

#### 14 Retrievers (Golden) 3-7-3/1

1 Puppy Dogs 9 Mos. & Under 12 Mos.

1 Dogs 12 Mos. & Under 18 Mos.

1 Bred by Exhibitor Dogs

*Winners Dog, Reserve Winners Dog*

1 Puppy Bitches 9 Mos. & Under 12 Mos.

1 Bitches 12 Mos. & Under 18 Mos.

1 Novice Bitches

1 Bred by Exhibitor Bitches

3 Open Bitches

*Winners Bitch, Reserve Winners Bitch*

4 Best of Breed Competition 3/1

*Best of Breed, Best of Winners, Best of Opposite Sex,*

*Select Dog, Select Bitch, Best Puppy'*

## SHOW #2

Total: 13 Dogs, 14 Entries

**JUDGE: BRIDGET BROWN**

---

### 10:10AM - 1 JUNIOR SHOWMANSHIP

1 Open Intermediate

*Best Junior Handler*

### 13 CONFORMATION

#### 13 Retrievers (Golden) 3-6-3/1

1 Puppy Dogs 9 Mos. & Under 12 Mos.

1 Dogs 12 Mos. & Under 18 Mos.

1 Bred by Exhibitor Dogs

*Winners Dog, Reserve Winners Dog*

1 Puppy Bitches 9 Mos. & Under 12 Mos.

1 Bitches 12 Mos. & Under 18 Mos.

1 Bred by Exhibitor Bitches

3 Open Bitches

*Winners Bitch, Reserve Winners Bitch*

4 Best of Breed Competition 3/1

*Best of Breed, Best of Winners, Best of Opposite Sex,*

*Select Dog, Select Bitch, Best Puppy*

## OBEDIENCE TRIAL

18 Dogs, 24 Entries

**JUDGE: DAWN ANTONIAK MITCHELL**

---

### 8:30AM

6 Utility B..... Nos. [1401-1405, 1407]

### 9:25AM

1 Utility A ..... Nos. 1501

### 9:40AM

7 Open B .....Nos. 1401-1407

### 10:45AM

1 Open A ..... Nos. 1301

### 10:55AM

5 Novice B ..... Nos. 1201-1205

### 11:30AM

3 Novice A .....Nos. 1101-1103

### 11:50AM

1 Beginner Novice B .....

## RALLY TRIAL

19 Dogs, 41 Entries

**JUDGE: DAWN ANTONIAK MITCHELL**

---

### 12:45PM

1 Rally Choice ..... Nos. 2901

### AFTERNOON

12 Rally Master ..... Nos.[2501, 2801], 2502, 2504-2512]

12 Rally Excellent B .....Nos. [2501-2502, 2504-2512], 2701

12 Rally Advanced B .....Nos. 2501-2512

1 Rally Intermediate ..... Nos. 2301

2 Rally Novice B ..... Nos. 2201-2202

1 Rally Novice A .....Nos. 2101

Moanalua Middle School  
1289 Mahiole Street  
Honolulu, Hawaii 96819  
(located next to Moanalua Gardens)

**Directions to the field behind the school:**

**From the west side:** Traveling on the Moanalua Freeway, take the “Airport/Tripler Hospital Exit Only (Exit 3)” cutoff. Stay in the far LEFT lane (you will come to a traffic signal). Turn left onto Jarrett White Road. Turn left at the second traffic signal onto Mahiole Street (you will see two “Dead End” signs). Continue turning LEFT until you are under Jarrett White. Continue past a building and parking lot. You will see a chain link fence with a few steps leading to an open field behind Moanalua Middle School on your left.

**From the east side:** Traveling on Moanalua Freeway, take the “Puuloa Rd./Tripler Hosp. (Exit 3)” cutoff (traffic signal- Jarrett White Road). At the traffic signal, turn right onto Jarrett White Road and get into the far LEFT lane. Turn left at the next traffic signal onto Mahiole Street (you will see two “Dead End” signs). Continue turning LEFT until you are under Jarrett White. Continue past a building and parking lot. You will see a chain link fence with a few steps leading to an open field behind Moanalua Middle School on your left.

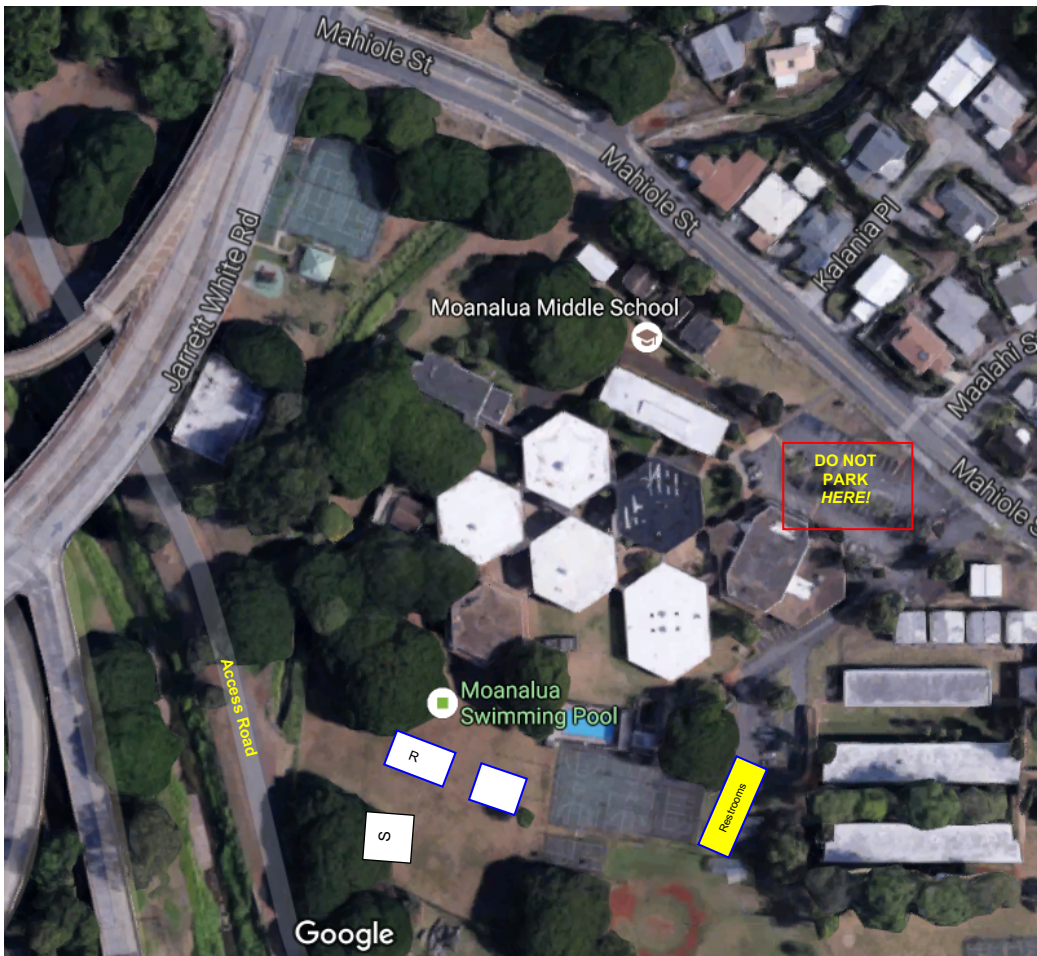
**From the east side AFTER 8:00 a.m. (when Moanalua Gardens opens):**

After you take the “Puuloa Road/Tripler Hospital” cutoff, turn into the Moanalua Gardens parking lot (DO NOT PARK IN THIS PARKING LOT). To your left, you will see an access road. Continue on this road. You will see a chain link fence with a few steps leading to an open field on your right.

**\*Reminders/Guidelines\***

Please do NOT setup before the clubs set up the rings and ring tents (approx. 6:30 a.m./ 7:00 a.m.). There will be NO overnight security. Moanalua Middle School will allow exhibitors to set up their crates under the large trees behind the classrooms. **Absolutely NO tent stakes are allowed. City Parks Department will allow pop-up tents only if they are secured with above-ground tent weights.**

It is strongly recommended that exhibitors park on the access road (see directions above). There is a small parking lot by the restrooms but is usually reserved for baseball practice on the lower field. **DO NOT park in the school’s parking lot on Mahiole Street.** A church has a permit to use this parking lot and is required to lock the parking lot after the services.



Public restrooms are located after the basketball courts in the pavillion (yellow box).

Please remove your own trash from the field as there will be no trash pickup. Please help us by following these rules so we do not risk losing this location for future shows/trials.

Rev. 11/29/2023